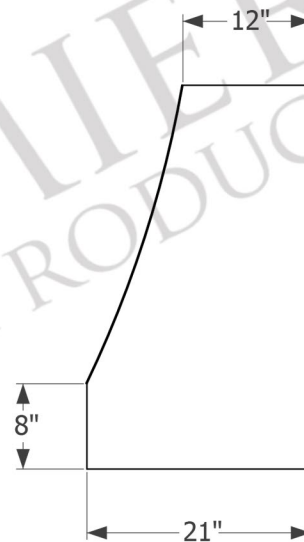
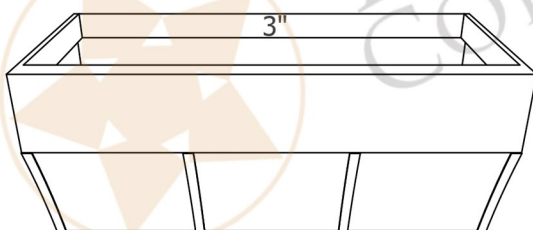
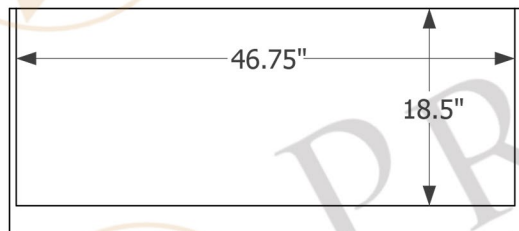
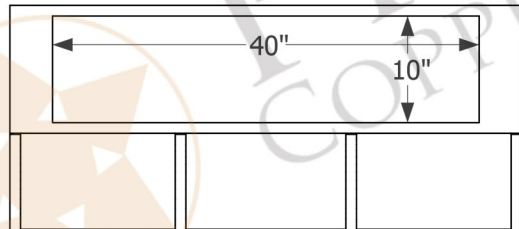
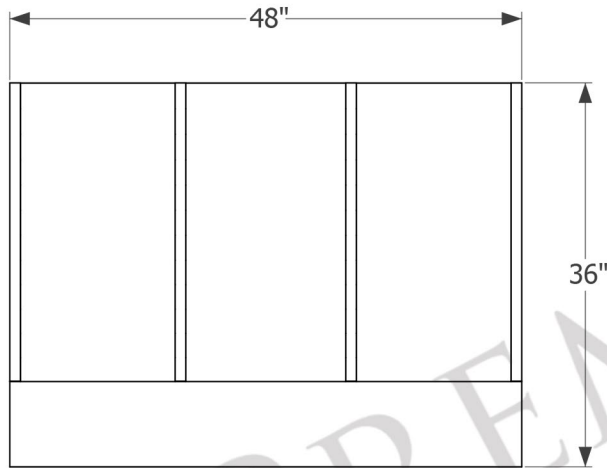




PREMIER
COPPER PRODUCTS

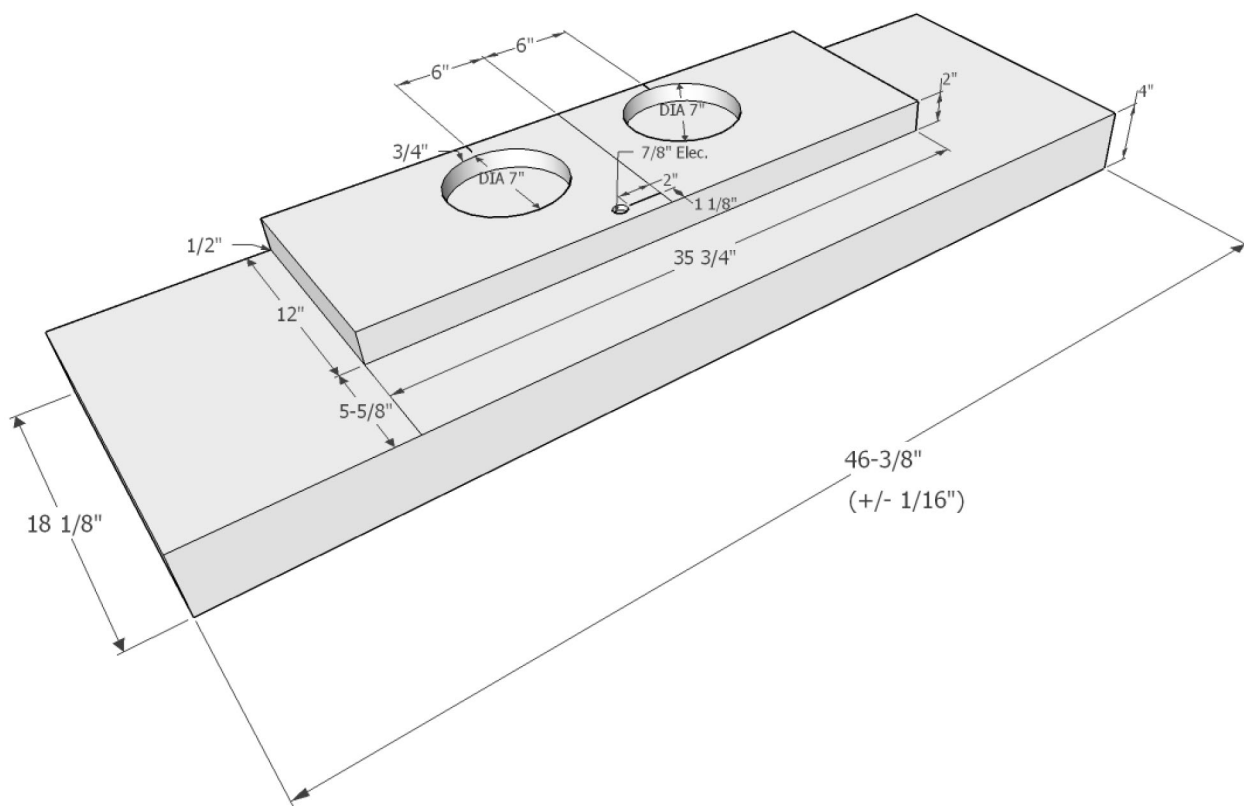
MODEL NUMBER: HV-TUCSON48-C2048BP1-TWSB

- * Description: 48" 1250 CFM Hammered Copper Wall Mounted Tucson Range Hood with Slim Baffle Filters
- * Outer Dimensions: 48" x 21" x 36"
- * Top Dimensions: 48" x 12"
- * Bottom Dimensions: 48" x 21"
- * Bottom Opening Dimensions: 46.75" x 18.5"
- * Finish: Oil Rubbed Bronze
- * Straps: Black
- * Skirt Height: 8"
- * Top Opening: 40" x 10"



THIS PRODUCTS IS HAND CRAFTED, SMALL VARIANCES IN COLOR AND SIZE MAY OCCUR.
DO NOT MAKE ANY INSTALLATION CUTS UNTIL YOU RECEIVE YOUR ITEM(S).

- * Description: 48" 1250 CFM Hammered Copper Wall Mounted Tucson Range Hood with Slim Baffle Filters
- * Insert Model Number: C2048BP1-TWSB
- * Insert Description: 1250 CFM, 1.5-4.6 Sones, Variable Controls
- * Insert Duct: Dual 7" Round Vent Openings
- * Lighting: LED Bulbs Included / *Lights Located on Front Panel*
- * Filter: Slim Baffle Filters
- * Insert Finish: Stainless Steel



SEVEN YEAR, IN HOME, LIMITED WARRANTY ON INSERT, THE BEST IN THE INDUSTRY!

Please visit ImperialHoods.com to view the details on their warranty.

All dimensions on inserts are (+/-) 1/8" and are subject to change. Drawings are not to scale.